

FEES SCHEDULE 2021-22

New students joining DISV benefit from one of Vienna's lowest fee structures for students entering an IB World School (total admission and tuition fees in the first year).

Additionally, the annual DISV tuition fees include the following direct educational costs, allowing parents a smooth start into the school year without worrying about extra costs:

- ◆ classroom instruction, supervision, in-school workshops
- ◆ assessment costs (IB Diploma examinations, IB MYP moderation, CATs assessments and the ISA test)
- ◆ exercise books, the loan of textbooks, supplies, educational materials and documentation, subscriptions, educational memberships, the yearbook, school photos, one PE kit (shorts/shirts) for every new student and the security service.
- ◆ whole grade overnight field trips (grade 2 to 12), single event/day field trips, additional activities (i.e. swimming, ice-skating)
- ◆ after-school activities

Included in tuition fees:



Classroom instruction & assessment



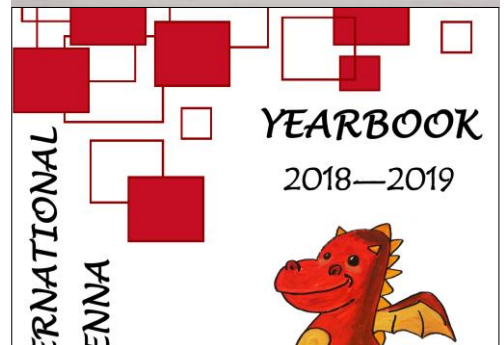
Professional school photos



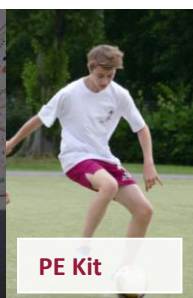
Whole grade overnight field trip



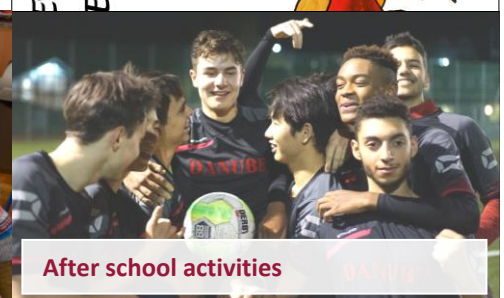
Elementary swimming / ice skating



Security



PE Kit



After school activities

New Student Fees:

Application Fee:	€ 300
Enrollment Fee:	€ 4100
Capital Fee:	€ 1970
Refundable Security Deposit:	€ 365

DISV Tuition Fee Schedule 2021/22

	1st instalment		2nd instalment - 1 st December		Total Fee		Total Fee 2% Reduction	
	15 th	July 2021	2021	15 th	July 2021	15 th	May 2021	
EYU 1		7280	7280		14560		14269	
EYU 2		7280	7280		14560		14269	
<hr/>								
Foundation		10483	10483		20966		20547	
Grade 1		10483	10483		20966		20547	
Grade 2		10645	10645		21290		20864	
Grade 3		10645	10645		21290		20864	
Grade 4		10658	10658		21316		20890	
Grade 5		10705	10705		21410		20982	
<hr/>								
Grade 6		12465	12465		24930		24431	
Grade 7		12465	12465		24930		24431	
Grade 8		12465	12465		24930		24431	
Grade 9		12465	12465		24930		24431	
Grade 10		12465	12465		24930		24431	
<hr/>								
Grade 11		13553	13553		27106		26564	
Grade 12		13475	13475		26950		26411	

Prospective parents from international organisations (UNO, OSCE, etc) or from embassies should consult with their organisation to obtain information regarding special arrangements for fee payments.

Fees Payment:

You may pay tuition fees either in one complete payment for the whole school year, or in two separate instalments by the dates specified above. Full payment of the Annual Fee before the 15th of May 2021 will be eligible for a 2% discount.

Late payment will incur a 1% monthly charge. All fees are quoted in Euros.

Capital Fee:

The fee is assigned to a fund specifically created to finance capital investments. The Capital Fee is non-refundable and will be charged in full regardless of the date of entry or withdrawal.

Supplementary Fees:

DISV only charges supplementary fees for the following items:

New to English Lessons (per semester): € 860

Learning Support Lessons (per semester):

A level: € 1300

B level: € 2600

Extended Learning Support: € 6500

Comprehensive Learning Support: € 18200

Learning Support Accommodations G11/12: € 650

Additional overnight/multi-day field trips (e.g. Model United Nations, Grade 11 Geography, Grade 11 Biology, Waluka Primary School, sports tournaments) – on a trip by trip basis

Boarding:

DISV offers boarding places in three boarding institutes in Vienna. Prices range from € 450 to € 700 per month, including supervision and meals.

Contact us for further information: registrar@danubeschool.com

Language A:

Students may wish to study a Language A other than those normally offered by the school. The school will support the student through the purchase of materials and textbooks, and provide space and equipment as necessary. We will also help students find a private tutor, **but families will pay for these lessons directly to the private tutor.**

Instrumental Music:

Students may wish to study a musical instrument. The school will support the student by finding appropriate space and equipment, where possible. We will also help students find a private tutor, **but families will pay for these lessons directly to the private tutor.**

School Lunch 2021-22:

Students may either bring a packed lunch or purchase lunch at our Cafeteria. Park Club Wien runs the Cafeteria and **payment must be made to the Business Office who collect payment on behalf of Park Club Wien.**

- ◆ Secondary Students – Annual Cost € 1268
- ◆ Elementary Students (Grades 1 to 5) – Annual Cost € 1010
- ◆ Elementary Students (EYU and Foundation) – Annual Cost € 756

PADIS membership 2021-22:

All parents are invited to contribute - €50 a year per family.